



# Kenai National Wildlife Refuge

## Snowmobile Map

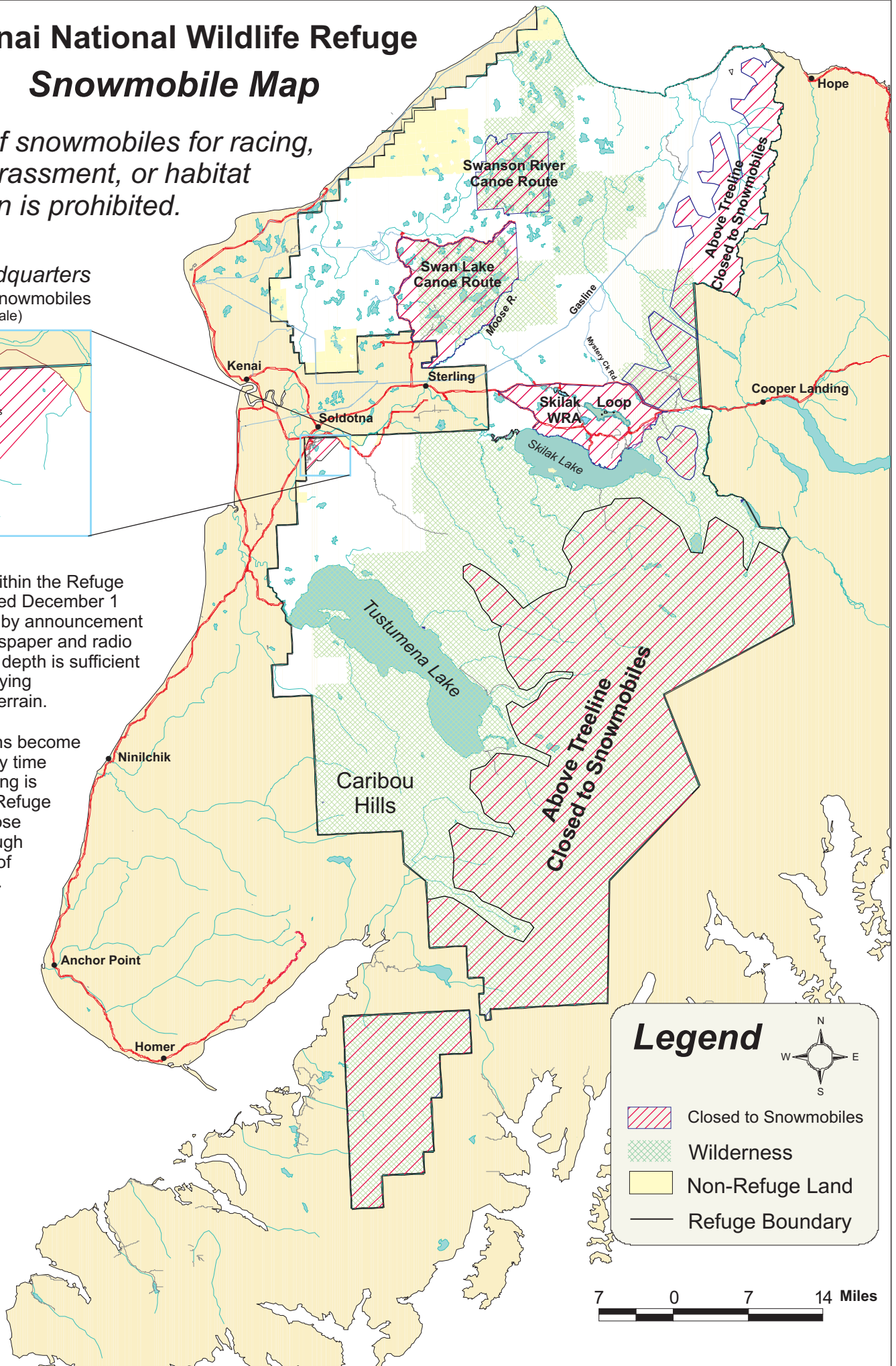
*The use of snowmobiles for racing, wildlife harassment, or habitat destruction is prohibited.*

**Refuge Headquarters**  
Area closed to snowmobiles  
(Not to scale)



Snowmobiling within the Refuge may be authorized December 1 through April 30 by announcement through the newspaper and radio only when snow depth is sufficient to protect underlying vegetation and terrain.

If snow conditions become insufficient at any time after snowmobiling is authorized, the Refuge Manager can close the season through the same types of announcements.



**Legend**

- Closed to Snowmobiles
- Wilderness
- Non-Refuge Land
- Refuge Boundary

