



## United States Department of the Interior

KENAI NATIONAL WILDLIFE REFUGE

P.O. Box 2139  
Soldotna, Alaska 99669-2139  
(907) 262-7021

IN REPLY REFER TO:

10041rk

July 2, 2010

### NEWS RELEASE

### FOR IMMEDIATE RELEASE

**CONTACT:** Kenai National Wildlife Refuge, Soldotna, Alaska

**TELEPHONE:** (907) 262-7021

**SUBJECT:** Forested Area at the Russian River Ferry Closed to Reduce Human–Bear Encounters

Acting Refuge Manager, Erin Williams, of Kenai National Wildlife Refuge (Refuge) announced today that a temporary closure of all public entry is in effect in a portion of the popular Kenai-Russian River Access Area. The closure has been enacted due to bear activity in the immediate area.

The closure encompasses approximately 29 acres near the Russian River Ferry. Specifically, the closure is in effect for:

*All areas beginning at the Russian River Ferry entrance road and parking lot, downstream along the Kenai River to Lover's Rock adjacent top the Sterling Highway, then east on the Sterling Highway to the point of beginning. The closure includes all lands in the described area greater than 25 feet from the Kenai River.*

The confluence of the Russian and Kenai Rivers is the most popular sport fishery in Alaska. The popularity of this fishery has unfortunately resulted in an accumulation of salmon carcasses along the banks of these rivers, which attracts both brown and black bears; at least five bears are currently using this small area. The goal of this closure is to reduce human/bear encounters and minimize risk of harm to people and bears. Persons who enter the closed area are subject to apprehension and citations by Refuge Officers or other law enforcement personnel in the area.

All fishermen are asked and encouraged to either take fish out whole, or “STOP, CHOP, and THROW”. This simple action of breaking or chopping and tossing fish carcasses into deep, fast flowing waters will reduce the number of fish remains which wash up on the riverbanks and decrease those bear attractants.

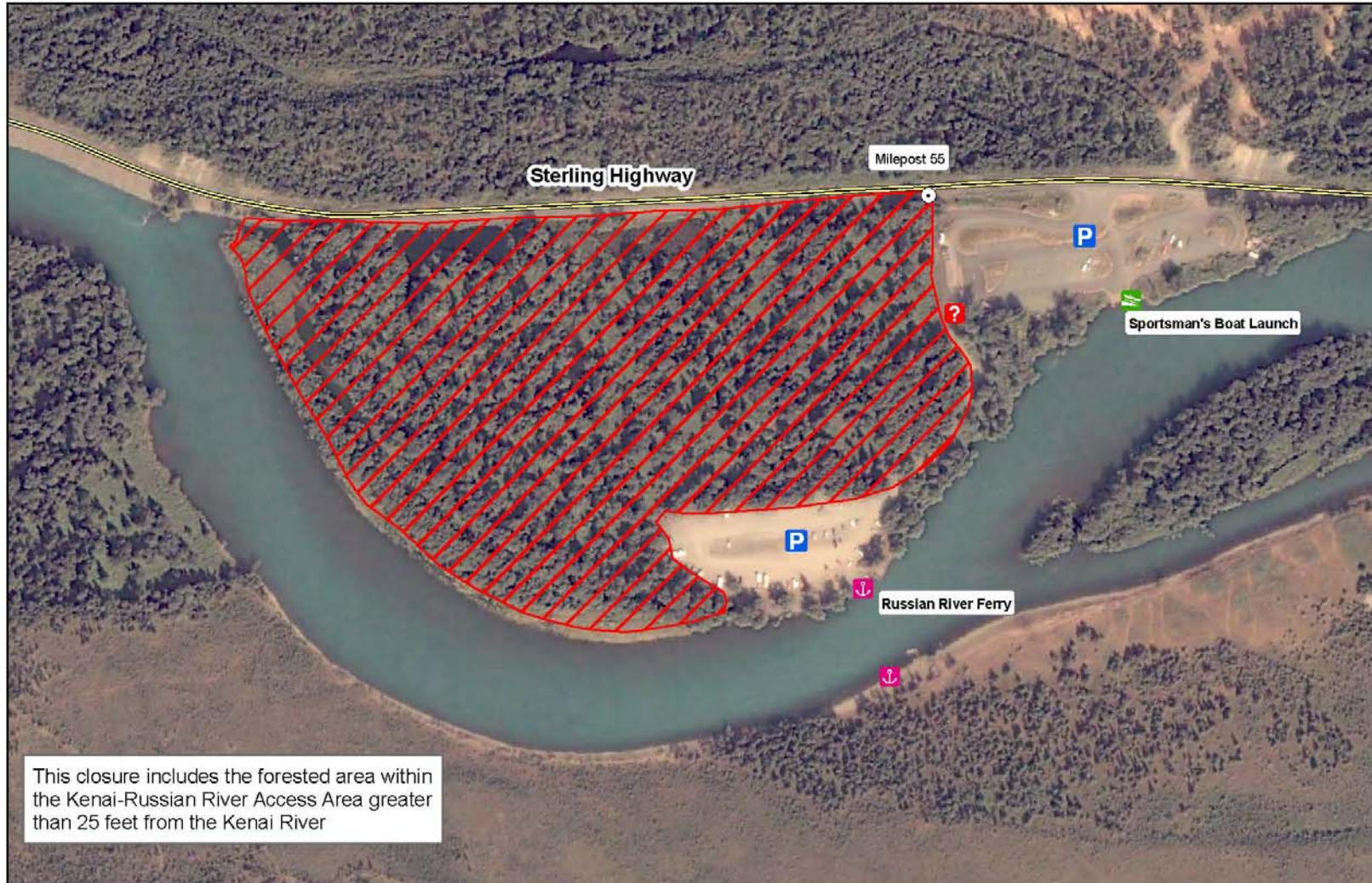


U.S. Fish & Wildlife Service

Kenai National Wildlife Refuge

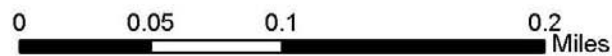
Soldotna, Alaska

Russian River Ferry Forested Area Closure - effective July 2, 2010



Produced in Biology Department  
Soldotna, Alaska  
Current to: 7/2/2010

Scale:



|  |                         |  |             |
|--|-------------------------|--|-------------|
|  | Closed to Foot Traffic  |  | Boat Launch |
|  | Visitor Contact Station |  | Parking Lot |
|  | Ferry                   |  |             |



UTM ZONE 5N  
NAD 83